

To help celebrate Waverly's 150th, the Waverly Public Library would like to invite all to a Historical Photo Gallery of Waverly. Comprised of photos from the library's Historic Photo Collection, the gallery features images of Waverly dating back as early as the 1860s. Complete with photos of river scenes, historic buildings and early Waverly happenings, the gallery gives the audience a glimpse of life in Waverly 75, 100 and even 140 years ago.

The Friends of the Waverly Public Library are sponsoring a reception opening the gallery on Thursday, July 16 from 5:30 to 7:30. The gallery will remain open Friday from 10:00 to 5:00 and Saturday 2:00 to 5:00. Feel free to stop in and browse the gallery at your leisure and enjoy a short trip back in time.

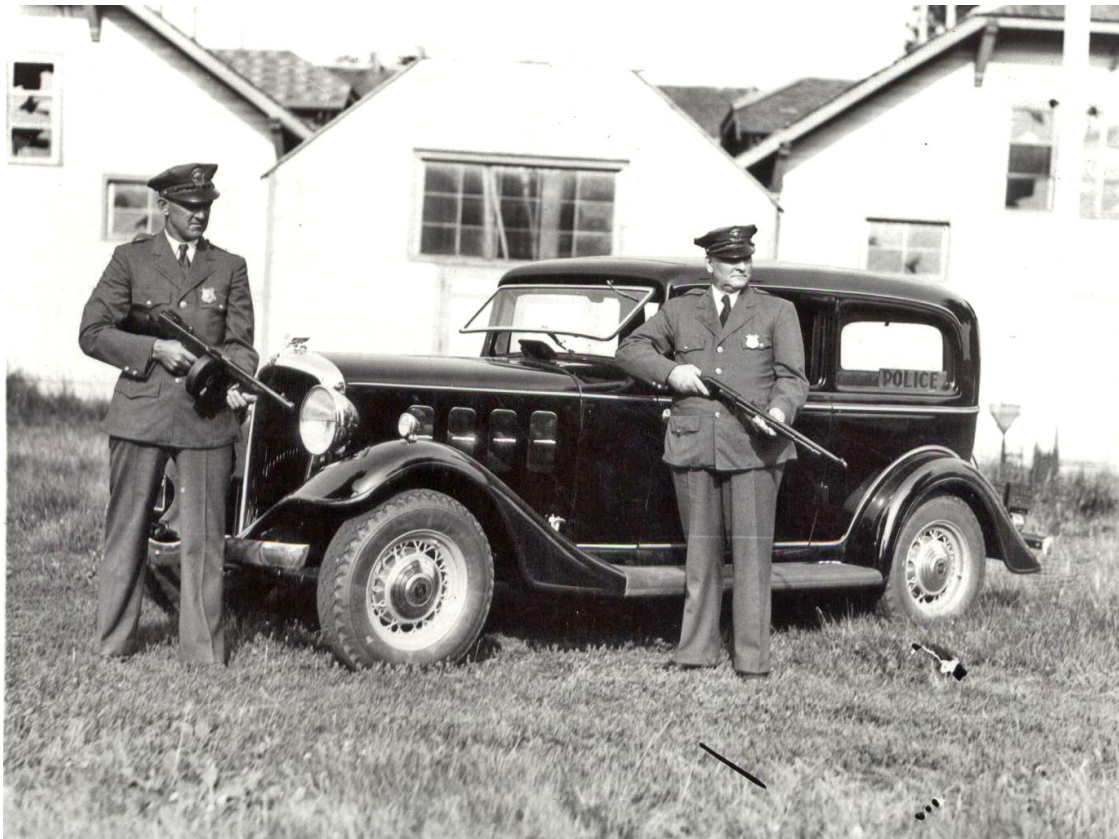


Photo Caption:

This 1930s photo of Waverly police officers with their weapons of choice is one of many interesting photos to be on display at the library's Historical Photo Gallery of Waverly.